

**DOORS & FINISHES**



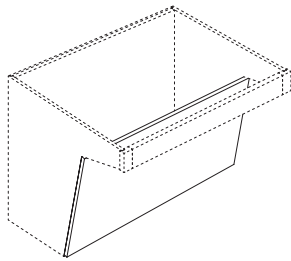
**JACKSON P PAINTED DOOR**

- 3/4" thick standard reveal square doors with slab drawer fronts
- Door frames are assembled with five-piece mortise and tenon joinery
- Recessed Shaker style rails, stiles, and center panel are constructed of painted MDF
- Decorative hardware is available but not required
- **Available in River Rock and Alpine White enamel paint finishes**

**NEW FINISH FOR THERMOFOIL DOORS – RIVER ROCK**

- Available on Marianna FOL/SR, Manor FOL/SR, and Sutton FOL/SR
- **First order date September 23, 2019**

**BASE CABINETS**



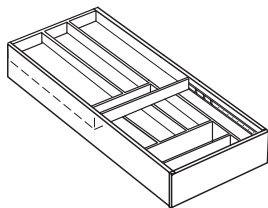
**PLUMBING SKIRT PANELS**

- Additional apron panel sizes to support additional plumbing skirt sizes
- Plywood construction only
- Not available with glaze detailing
- Shipped loose for field installation

PLUMBSKIRTPNL24 (fits HWSB24PS)

PLUMBSKIRTPNL27 (fits HWSB27PS)

PLUMBSKIRTPNL33 (fits HWSB33PS)



**TIERED CUTLERY DIVIDER KITS**

- Wood cutlery divider in a dovetail drawer box
- Maple clear-coat finish
- Can be installed to replace top drawer of corresponding cabinet
- Shipped loose for field installation

TCD30 (fits DB30 or B30BD)

TCD36 (fits DB36 or B36BD)

**DOORS**



**FAIRVIEW TC TRUCOAT DOOR**

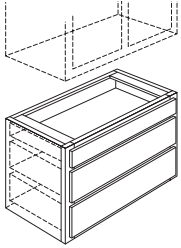
- Currently unavailable to order
- **Please contact your account manager with any questions**

## FINISHES

**CHERRY STAIN AND GLAZE FINISH – CINNAMON**  
**OAK STAIN FINISH – CHESTNUT**

- Last order date August 30, 2019

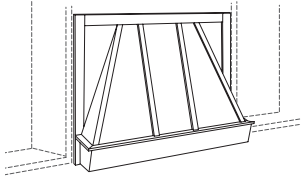
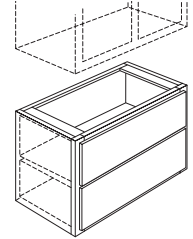
## WALL CABINETS

**DRAWER STORAGE THREE DRAWER CABINETS**

- DS18 (TruCoat)
- DS24 (TruCoat)
- DS30 (TruCoat)

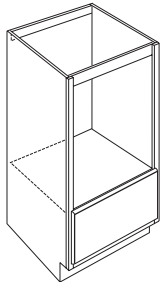
**DRAWER STORAGE TWO DRAWER CABINETS**

- DS18-2 (TruCoat)
- DS24-2 (TruCoat)
- DS30-2 (TruCoat)

**36" WIDE WOOD HOODS**

- WH36HP (all styles and species)

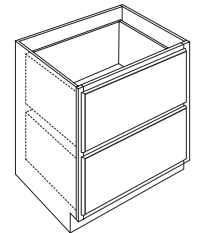
## BASE CABINETS

**BASE DISHWASHER CABINET**

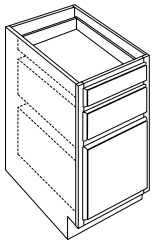
- BDW27 (TruCoat)

**TWO DRAWER BASE CABINETS**

- DB27-2 (TruCoat)
- DB30-2 (TruCoat)
- DB33-2 (TruCoat)
- DB36-2 (TruCoat)



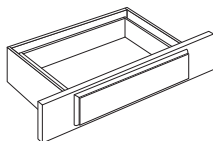
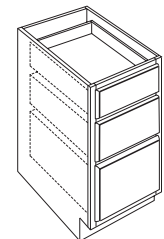
## OFFICE CABINETS

**FILE DRAWER DESK BASE CABINET**

- FDB18 (TruCoat)

**DESK DRAWER BASE CABINETS**

- DDB12 (TruCoat)
- DDB15 (TruCoat)
- DDB18 (TruCoat)
- DDB21 (TruCoat)
- DDB24 (TruCoat)

**SINGLE DESK CABINET DRAWERS**

- DD30T (TruCoat)
- DD36T (TruCoat)

## VANITY CABINETS

**SINGLE VANITY CABINET DRAWERS**

- VDD30T (TruCoat)
- VDD36T (TruCoat)

